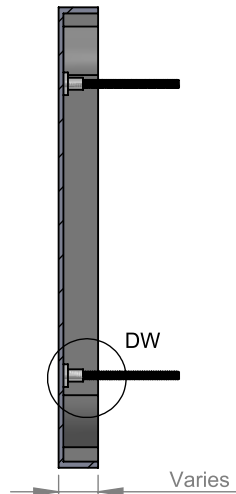
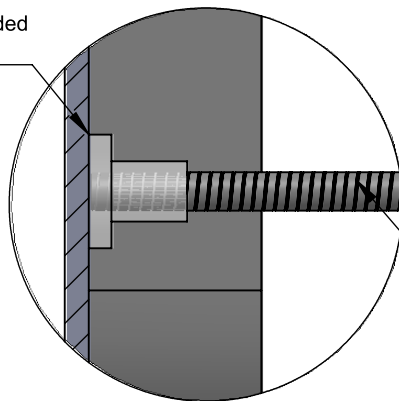


BACK VIEW II SCALE 1:5

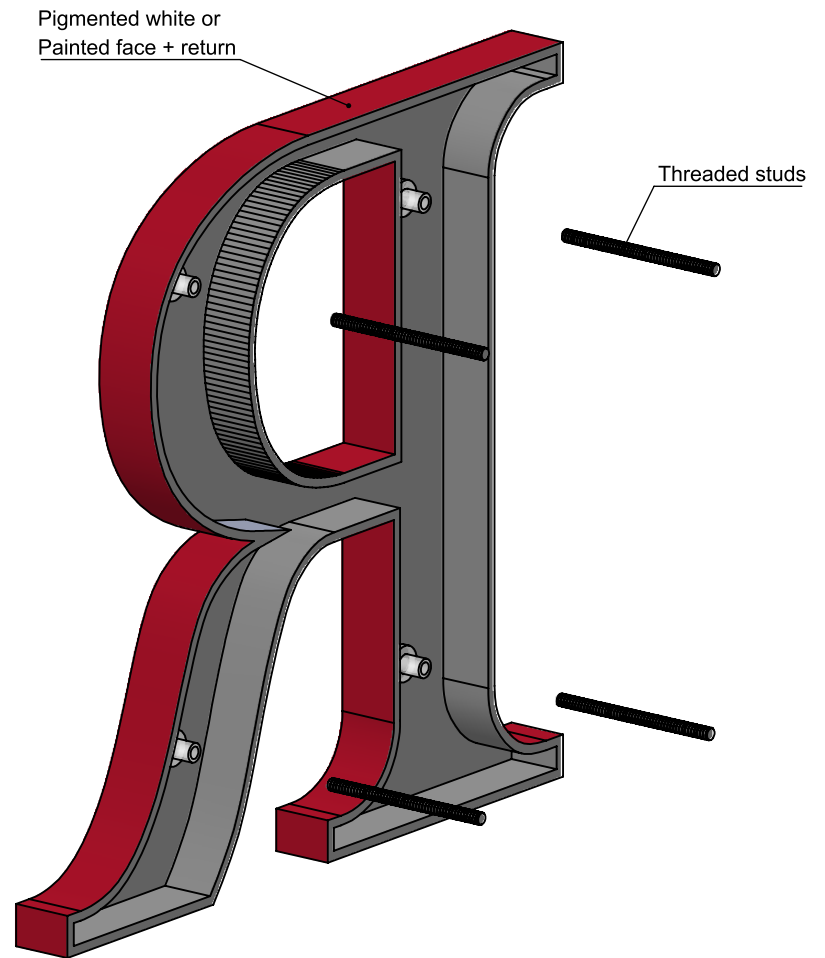


SECTION VIEW A-A II SCALE 1:5

Stud boss solvent bonded
to letter back



DETAIL DW II SCALE 1:1



ISOMETRIC BACK VIEW II SCALE 1:3

LETTERS
AND
SIGNS.COM

NOTES:

- Typical stud length 2" beyond back of letter
- Injection molded with CAB plastic

STYLES:

- Architectural, Helvetica, Optima, Roman, Stand Block, Times Bold.

TITLE:

MINNESOTA LETTER - STUD MOUNT

MATERIAL:

CAB - PLASTIC

PRODUCT TYPE:

INJECTION MOLD

DWG NO. MINN10

REV 08/24/16

SCALE: AS INDICATED

SHEET 1 OF 1